



# LIGHT LINES

WINTER 1994/1995

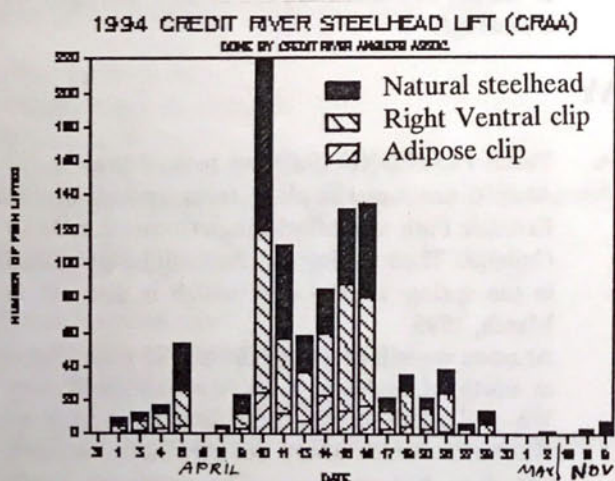
V. 16, No. 1

## C.R.A.A. REHABILITATION AND FISHERIES WORK REVIEW

By John Kendell

### FISH LADDER (March 31 to May 2, 1994)

The fish ladder was opened on March 31, 1994 on a cloudy day that reached a 5 C high. Ice was still floating down the river, and the water temperature was a freezing 2 C. Five experienced volunteers began the work that would exceed everyone's highest expectations. Figure 1 shows the results of the 1994 lift that almost doubled the previous year's record lift. As the river warmed up the fish started jumping, until a major cold front hit on April 5. Slowly the water warmed again and the fish started to jump. After the cleanup in Erindale Park (April 9), the five of us joined those at the ladder. It was a warm and sunny day, but only three fish were lifted in the morning. In the afternoon another 20 were lifted, and as we left the ladder for the day fish really started to jump.



1994 Streetsville Fish Ladder steelhead lift.

On Sunday (April 10) the first lift yielded 112 steelhead. Two hours later another 45 were lifted, and after two more hours the final lift of the day brought a new daily record total of 220. The following week was hectic with

seven days of big lifts. The yearly record of 640 set in 1993 was left behind by April 15. Now eyes focussed on the target of our dreams which was 1000 fish. The ladder was operated every day it could be, and by April 29 we thought we had reached our goal, but a recount of numbers said we were only at 998. So, extra days were added to the lift and finally the 1001 fish was lifted on May 2, 1994 in the afternoon. A record lift that we hope to break in the upcoming year.

### ERINDALE CLEAN-UP (April 9, 1994)

A clean up was completed in the lower half of Erindale Park on the Saturday morning. There was a disappointing turn out of 5 people. However, eight bags of garbage were filled in two hours and then we went to the fish ladder.

### UPWELLING BOX (April 15 to July 1, 1994)

An upwelling box is for the human assisted fertilization and hatching of eggs in a natural setting. CRAA built our upwelling box in 1991, but it was never put in operation. When Derek McNair and I first went to examine the box it was full of mud (20 cm deep), damaged by ice, the inflow pipe was broken, and it had no water coming into it. After discussing the situation with Ron Turalinski who built the box, the repairs were done by Derrick Hussey and myself. Then it had to be cleaned out which was a day's work. Chris Goh (Director) and his family were glad to help out. On April 20 it was fully operational with an abundance of cold, clean spring water flowing through it. Soon after it received eggs, thousands of fertilized eggs were placed into it over the following week, and then it had to be monitored four days a week. Derek McNair (Fish

Continued on page 3



## Credit River Anglers Association

### LIGHT LINES

Editor: Paula Carrasco

Contributors: John Kendell, Chris Goh, Derrick Hussey

Contributions are welcome from members and non-members alike.

Send your articles, comments and suggestions to:

Credit River Anglers Association  
60 Dundas Street East, P.O. Box 48042  
Mississauga, Ontario L5A 2G0

Or call the CRAA 24-hr Hotline at 567-6656

Commercial advertising rates:  
1/16 page -- \$15, 1/8 page -- \$30, 1/4 page -- \$50  
Maximum size 1/4 page.

Newsletter production: 300 copies per issue  
Printed on recycled paper.

## UPCOMING EVENTS CONT'D

### APRIL

#### 1-25 FISH LADDER OPERATION

The fish ladder will be cleaned up and organized for the steelhead transfer of 1995. Volunteers will be needed daily, and we're looking for people with 4X4 vehicles to help transfer steelhead by trailer. Call the hotline to volunteer, and tell all your friends to come out and help. The operation of the fish ladder is the best way we, as anglers, can improve the fishery. By transferring fish past Norval, which is a barrier to steelhead, we will ensure a much larger steelhead population in the future. Help the fish now so there will be more to catch tomorrow!

The fish ladder will be operated every day from 10:00 am to 4:00 pm (weather permitting) to transfer steelhead up the river. Make sure you come out and help the fish you love to catch.

#### 25 ANNUAL GENERAL MEETING AND ELECTIONS

The time and location will be announced in the March, 1995 'Light Lines'. CRAA will need a new Treasurer and Fisheries Officer since Donna and Derek McNair will be unable to properly fill the positions during the 1995 year. If you are interested call the hotline and leave us a message.

### MAY

#### TBA TREE PLANTING (9:00 am to 4:00 pm)

At 9:00 am we will plant trees and shrubs in Erindale Park with Mississauga Councillor David Culham. The meeting location will be published in the spring 'Light Lines' which is due out in March, 1995.

At noon we will meet at Huttonville Creek (500 m north of highway 7 on Mississauga Road). We will plant cedar trees in the section of Huttonville Creek where our rehabilitation work was done last summer. The cedar trees will provide important shade for the creek to keep water temperatures low during the summer.

Make sure you come out and help. There is a special sense of satisfaction in knowing your helping the quality of the river and the fishery. We will have a free barbecue at the afternoon site free for all volunteers.

## UPCOMING EVENTS

### JANUARY

- 15 **NEW HOTLINE NUMBER.** The current number (567-6656) will have a recording of the new number until February 28.
- 25 **MEMBERSHIP DRIVE BEGINS** (Details will be mailed out including a list of the prizes to be won.)

### FEBRUARY

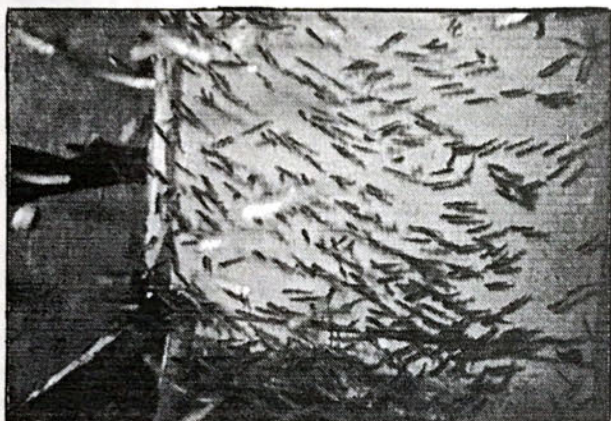
- 17-19 **SPRING FISHING SHOW - INTERNATIONAL CENTRE** (daily)  
CRAA will operate a booth at the show to increase public awareness, raise funds through a raffle, and solicit new members. **Volunteers are needed.** Volunteers receive free entry into the show and free parking.
- 17 **SPRING RAFFLE BEGINS - BUY YOUR TICKETS TO WIN BIG PRIZES**

### MARCH

- 10 **SPRING 'LIGHT LINES' MAILED OUT**



Rearing Officer) was there at least half the time keeping a watchful eye on the eggs, and Derrick Hussey and myself watched the rest of the time. Finally, on June 1st the first sac fry was seen, but we still had no idea what would happen. The following week we saw over 100 sac fry in the rocks, but by June 10 they had disappeared. Where did they go? Derek McNair called me and in a disappointed tone told me the news. But being an optimist I said lets wait and see. I had a feeling the eggs and sac fry were fine. Then, on June 15th there were 100 - 2 inch fry swimming on the holding side of the upwelling box.



*Some of the 2 inch steelhead fry hatched in the CRAA upwelling box at Terra Cotta (June, 1994).*

Over 2000 fry had hatched to be seen by members at the CRAA Picnic. In the end thousands of fry hatched which gave us a very high survival rate.

#### **HUTTONVILLE CREEK WORK DAYS** (June 11 and 12, 1994)

On Saturday ten volunteers arrived at the site near Mississauga Road and Highway 7 to begin our rehabilitation work on nursery streams that flow into the Credit River. By lunch over 300 trees had been planted, 100 m of barbed wire and fence were removed from the creek, and 2 tonnes of rock were placed to protect an eroding bank. In the afternoon two wooden bank stabilizers were installed to prevent any further erosion in different areas, and over 50 small boulders were placed to increase aeration into the creek and remove silt from the creek bed. On Sunday three volunteers planted another 100 trees, placed a 1/2 tonne of rock to protect a large willow tree, and blocked an overflow channel that leaves small trout to die when it dries up in the summer. Now trout will not become trapped in this overflow, and hopefully we will have a few more fish in the future.

#### **CLUB BARBECUE** (Terra Cotta, June 18, 1994)

Over forty CRAA members with their families, enjoyed a great time at the Terra Cotta Conservation Area.

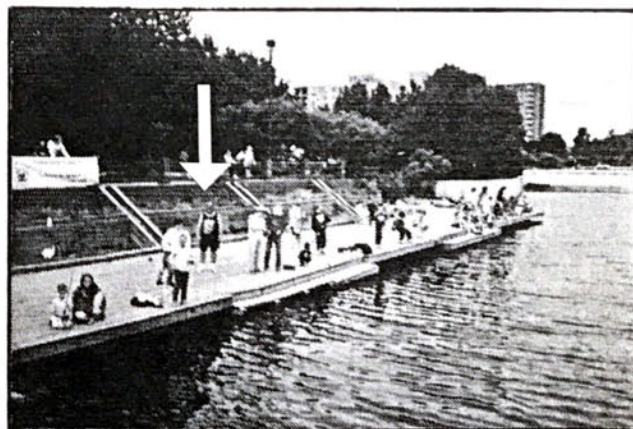


*Everyone enjoyed the CRAA Picnic*

Some fished for trout that we had stocked, played sports, observed the upwelling box, relaxed, and had a great barbecue cooked by Donna McNair. Everyone had a great time and I'm sure many more members will come out next year.

#### **URBAN FISHING FESTIVAL** (Lake Aquitaine, Meadowvale, July 10, 1994)

Eight CRAA members came out to help the MNR and CVCA to hold a fantastic fish and education day for over 300 kids.



*CRAA member Steve Waud (below the arrow) watching over the young anglers.*

There is nothing like helping youngsters catch their very first fish. The joy it brings to them is beyond description,  
*Continued on page 4*



and the rewards to us, as anglers, is more than I ever expected. I hope more members help out next year to take part in the fun.

#### HUTTONVILLE CREEK WORK DAYS (July 16 and 17, 1994)

Seven CRAA members, and three Erindale Environmental Club Members installed a cattle crossing made out of terra-fix (cement blocks wired together). Over 300 cement pieces (20 kg each) were laid, and wired for a cattle crossing on Huttonville Creek.



*Finishing the cattle crossing on Huttonville Creek.*

This is in the same area that CRAA's other work was done, on June 11 and 12. This allows the cattle access to water but prevents soil erosion, and the cow manure is removed by the farmer so it does not enter the creek. Here we can see CRAA successfully working with another club, a landowner, and the CVCA to promote healthy fish habitat.

#### HUTTONVILLE CREEK UPDATE

In May, 1994 we scouted Huttonville Creek. It's a beautiful cold stream where it crossed Queen Street surrounded by dense forest for the last 5 km. At highway 7 it ran through 6 km of open field with cattle access to 3 km. The upper half was warm (30 C) and scummy, while the lower section had trout smolts in it, and was (14 C) perfect for trout reproduction. After all our work was completed, and the fabulous work of the CVCA (fencing and tree planting), the upper creek was crystal clear and down to (22 C). The lower half was at (15 C). Remember, this is in August, when rivers reach their maximum temperatures. The work had an immediate impact, and another tree planting of cedar trees has been planned for May, 1995 to provide shade for the upper creek. REHABILITATION PROJECTS ARE THE

#### BEST THING WE CAN DO TO SAVE THE RIVER!

#### STREETSVILLE DAM FISH LADDER IMPROVEMENTS (August 20 and 21, 1994)

On Saturday eleven CRAA members and Jon Bisset (MNR Biologist for Peel) began a major rock movement to increase the efficiency of the fish ladder. Over 20 000 pounds of rock and boulders were moved and placed by hand. The result was the widening and deepening of the entrance to the fish ladder. Before work started the channel was 30 cm deep and 1 m wide. Now the channel ranges from 80 cm to 120 cm deep and 3 m wide.



*The entrance into the Streetsville Fish Ladder.*

In addition, large deflectors were built above the entrance to the fish ladder to control river flow from the dam so the ladder attracts more fish. While the ladder was operated twenty other days were also spent on rock movement over the fall season.

#### FISH LADDER OPERATION

On August 25 the fish ladder was opened and monitored daily for Atlantic Salmon. Unfortunately no Atlantics were lifted, but the very first steelhead was lifted in the fall, on September 18. Unfortunately, vandalism resulted in the closure of the ladder before Atlantic Salmon had come into the river.

**VANDALISM** was a major problem at the ladder this year. Over twenty times many of the rock removed from the channel were kicked in, the fish ladder was damaged by an axe, the ladder was bent, very important tools were broken or stolen and, worst of all, the cage that is used to lift the fish was smashed in by logs that were jammed in to allow salmon to pass when we were not operating the ladder. The latter damage resulted in the fish ladder

*Continued on page 5*



being closed for repairs from September 18 to November 8, when most of the necessary repairs were done by the club. It is disgusting that these vandals were so ignorant. They intended to get fish through the ladder, but their extreme ignorance resulted in so much damage that the fishway was shut down.

We were very fortunate to catch the damage in time. The screen that prevents debris from entering the ladder was pushed into the river (it weighs 2 000 pounds). It almost fell into the ladder, which would have destroyed it, and cost \$50 000 in damages. If this had happened it would have meant the end of the fish ladder until at least 1996. **If you know the culprits please come forth and inform CRAA and the police.** Police reports have been made but no charges have been laid besides trespassing.

#### MULLET CREEK CLEAN-UP (September 17, 1994)

After the salmon tournament 15 CRAA members, three Erindale Environmental Club members, and six high school students from Tracy James' grade twelve environmental class at Gordon Graydon completed the daunting task of cleaning up Mullet Creek. Over 3 000 lbs of garbage was removed from the creek valley from as far away as 2 km up river. It was all done by hand including carrying the debris across the river so the city could remove the garbage by truck. Close to 20 tires were removed, including a five foot high tractor tire, over forty extra large bags of garbage, five metal doors, three street signs, two rusted bikes, and countless plastic bags. Additionally, two log jams were removed that interrupted steelhead migration. Remember, Mullet Creek has naturally reproducing steelhead.

#### SALMON TOURNAMENT (September 17 and 18, 1994)

With lots of fish in the river the annual Salmon Tournament was held over this beautiful September weekend. Unfortunately there was a very poor turnout, but the forty anglers that took part in the event brought in over \$1 500 in prizes, and the club raised a surprising amount of cash, over \$1000, especially from the raffle for a float rod and reel. Here is a list of the winners.

##### Saturday

1st	Peter Decensare	23.9 lbs
2nd	James Wylie	22.1 lbs
3rd	Debbie Purgavie	21.8 lbs
4th	Joe Nicastro	21.2 lbs
5th	Ryan McLean	20.9 lbs
6th	Nick Simeonov	19.7 lbs

##### Saturday Cont'd

7th	Jerry Tusa	19.1 lbs
8th	Sabrina Mesercola	18.1 lbs
9th	Brad Cansick	17.5 lbs
10th	James Townsend	15.1 lbs
11th	Mike Cabral	11.7 lbs

##### Sunday

1st	Ryan McLean	25.2 lbs
2nd	Brad Cansick	22.7 lbs
3rd	Debbie Purgavie	15.7 lbs
4th	Phil Colbourne	11.7 lbs



*CRAA Salmon Tournament winners on Sunday.*

Everyone involved in the tournament had a great time, and most people went home with a prize. I hope to see a lot more members out at next fall's tournament.

#### FISH LADDER FOR STEELHEAD (November, 1994)

The fish ladder was repaired and opened for steelhead on November 8. On the two following days 12 steelhead were lifted. These were the 2nd through 13th steelhead ever to be lifted in the fall (the first one was September 18, 1994). Unfortunately a lack of rain and cold water prevented a big lift, but many fish went through the ladder on their own over the month, since the cage was left up. A lack of volunteers was the main reason for not operating the ladder, because most people are unavailable during the week. **Next April will be very busy down there, so make sure you come out and help as much as you can. Take a day out of fishing, bring a friend, enjoy helping the fish, and make the fishing better for yourself in the future.**



# WINTER STEELHEAD

By John Kendall

After writing a biology exam in the morning I walked through the forest on my way to the clay banks pool. What a relief, to be out of school and into nature. I knew the river had a few steelhead in and that it was just a case of finding them. As I approached the clay banks I had a great shock; on a beautiful day in mid December, 1993 there was nobody else there. It was like a dream, now if there were only fish.

I cautiously walked onto the ice ledge, seeing it was only three inches thick. I dropped the float in, with a chartreuse roe bag, and hoped it was on its way to a big chromer. Well I was getting discouraged after ten minutes of drifting alone, hooking bottom, leaves, twigs, and even the skeleton of a dead salmon. But, finally it happened! The float dropped and a beautiful 8 lb steelie rolled on the surface. The silver side was blinding in the afternoon sun. After a pleasant fight I removed the hook and released the fish without a touch from my hands. What more could I ask for? More fish of course.

I was very fortunate to have the pool to myself, and I happened to catch a small run of steelhead moving through the park. Every fish I landed was fresh from the lake, including a 13 lb American steelhead with a left ventral fin clip. I wish every day of fishing was like this one.

## WINTER APPROACH AND PRESENTATION

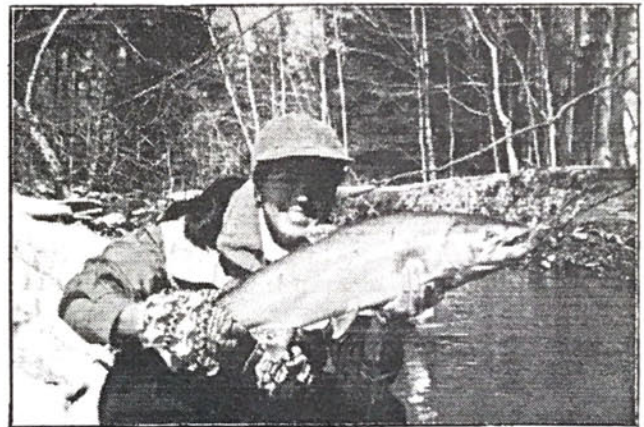
The winter is a strange time to be chasing steelhead: standing on ice shelves, shivering in a snow storm, crawling through snow banks, and continually cleaning the ice of your line. However, it can be one of the most exciting times to land a steelhead. There is nothing like catching a chrome fish while sliding over ice through a foot of fluffy white snow. Especially if there is nobody around.

The winter steelhead are usually lethargic, sitting on the bottom of the slowest, deepest pools, waiting for the warm weather of spring. Fortunately, for anglers steelhead also like to snack once and or twice while waiting for spring. But remember, winter fish act very different than fish in the spring and fall.

The water is crystal clear and lower than spring and fall levels. Therefore, the fish can see better, and are much more spooky. They must be approached with stealth.

Very quietly walk along the bank, staying as far from the edge of the ice and water as possible. One wrong move, too much noise, and the fish will not bite. Since fish can see those florescent red jackets from a mile away, wearing dull coloured clothes will also help.

Once you set up in your favourite pool use a tiny float, lure, or bottom bouncing weights and extremely light tippet. If your using roe try tiny bags with three or four trout eggs, or a single salmon egg. Drift the slowest and deepest water possible keeping your bait close to bottom. When you retrieve your float keep it **QUIET**. Remember, silence and invisibility means more fish!



*Paula Carrasco with a winter steelhead in February. Notice the snow in the background.*

Remember if your confronted with an ice ledge, as we often are in winter, run your bait as close to it as possible. Fish like something over their heads for protection. Also, if you walk too close to the edge of the ice your probably standing over the fish, and it's sitting there watching your shadow and having a laugh at you.

Most winter fish are either trickling in from the lake, or dropping back to the lake for some reason. Therefore, do not expect any tremendous days. Most winter days will produce from zero to five hook-ups. That's not too bad when most anglers are hiding at home under a blanket with a fishing magazine.

A reminder to check your regulations carefully, you do not want to be fishing where your not supposed to. Also, **BE CAREFUL!** The water is freezing, and ice ledges can be very dangerous.



## WATCH THE FLY

Cheticamp Atlantic Salmon fishing  
By Chris Goh

It was still dark as I struggled to put on my boots at the river bank. The drowsiness of sleep still not yet banished by the coffee, I stumbled to keep up with the guide as he crossed the river.

After hiking along a trail that ran beside the river for about 3 km, we reached the "1st Pool" of The Cheticamp. I stood to admire the beauty of the river just as the sun was breaking over the trees. The river broke over a series of ledges and boulders at the top into a deep dark pool. Bordered by high rocky ledges (up to 20 feet high) off both sides, this pool was 100 feet long tapering onto a shallow gravel tail out. My mind screamed "FISH" and I could smell the piscatorial creatures!!

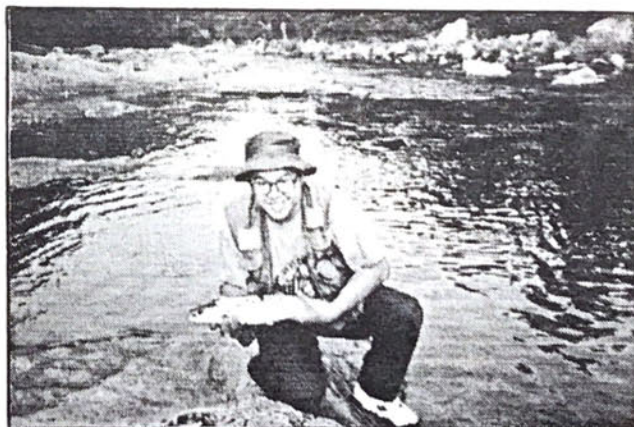
Tying on a small bomber, I made the first upstream cast to entice "my first salmon" on a dry fly. "Watch the fly, watch the fly", whispered the guide over my left shoulder. No fish rose. I stripped the fly back, false cast a couple of times to dry it and cast upstream again. "There should be a fish in that lie...watch the fly, watch the fly". I watched the fly for an hour and a half until the guide decided that the fish was probably not there. Anyway, the 1st Pool wasn't all that great at this time of the year!

Half a kilometre upstream is the "Chance Pool". The guide lifted my flagging spirit telling me that he hooked a good grilse here two days ago and rose a decent sized salmon. After coming all the way here from Toronto, hiring a guide and all that, it would have been hard to live it down back home if I didn't at least hook a fish!

The "Chance Pool" starts at the top breaking over a small ledge at a very narrow section of the river. Right after the ledge it shoots into a channel only 12 feet wide with sharp rock ledges on both sides. It's as if someone took a sharp knife and cut a chute into a slab of butter. This chute is called the "Coffin". The guide quickly spotted a fish holding at the end of the "Coffin" and I tried casting for it. The idea was to cast 45% downstream across the river on a tight line, and as soon as the fly hit the water, raise and hold the rod upstream so that the fly starts waking across the current. First cast, I hooked the tree at the back of me. 2nd cast, I got it across nicely but forgot to hold my rod high and upstream and the fly drifted past the fish before it started waking. "Maybe I should use the Mepps in my breast pocket". After about 20 minutes the fish rose and in a blind panic, I set the hook into a mouthful of nothing, ripping water and making popping noises that could be heard in Vancouver! Obviously, I had put the fish down permanently.

"Don't worry. We'll find another fish". We moved across the bridge to the other side of the river below the "Coffin" where the chute emptied into a wide shallow (5 feet deep) pool, littered with table-size boulders. "Cast straight across to the current seam where it passes that rock point. Let it dead drift past that point and tighten up to let the fly skate". Sounded easy except that there was a Force 5 wind blowing right into my face. I took a deep breath, kept my mental fingers crossed, and blasted with my best double haul. The fly landed right on the money. "Watch the fly, watch the fly". As the fly drifted down past the rocky point, I tightened up on the line and obediently the fly skated across the width of the pool. "Watch the fly, watch the ...Set the hook!!" I was on to a nice bright grilse that took on the swing. The first run took it to the end of the pool before it jumped out of the water. Another jump a few seconds later and another and another... the fish took seven leaps out of the water before it tired and I landed it.

The spectacular fight of the Atlantic Salmon is the main reason anglers travel the world to find this specie. It was only a grilse I fought, so I can imagine what a 20lb fish bright, fresh from the ocean and still with sea-lice will do.



Further upstream from "Chance Pool" is the most spectacular of the Cheticamp's pools, the "2nd Pool". Here, I rose a good salmon and a couple of grilse but did not to hook into them. I had fished this river at its worst - the end of July during a very dry summer when the water level was the lowest in years. Now I can safely say that this river is certainly worth a visit, especially in June at the peak of the run!



## JULY 1994 QUESTIONNAIRE REVIEW

Compiled by Derrick Hussey

Out of 114 questionnaires mailed out 31 were returned for a 27.2% return rate. This was very successful in getting your comments heard by the CRAA executive. If you have any other comments or questions call the hotline, or mail us a letter.

The top four answers are given where applicable:

ANSWERS ARE IN ITALICS

1. What type of events would you participate in?  
*1st Tree plantings*  
*2nd River rehabilitation*  
*3rd Clean-ups*
2. What type of events would you not want to participate in?  
*1st Heavy physical labour*
3. How often do you call the CRAA Hotline?  
*1st Rarely*  
*2nd Never*  
*3rd Once a month*
4. What kind of information would you like to receive from the Hotline?  
*Exactly what we hear (upcoming events, and fishing conditions)*
5. Can you volunteer any amount of time to specific projects?  
*Mostly on weekends for rehabilitation work*
6. Would you like to see the Association organize any social events (i.e. BBQs, dances, educational/instructional seminars, etc.)?  
*1st Barbecues*  
*2nd Fishing trips*
7. Do you have access to, or knowledge of any special interest that you would be willing to share with the membership?  
*No answers*
8. Do you know anyone who may be willing to assist the Association with prize donations/incentives?  
*No answers*
9. At any time would you be able to share materials, pictures, articles, etc. for the 'Light Lines' publication?  
*Only one yes*
10. What, if any, changes would you like to see take place with CRAA?  
*1st Your doing fine*  
*2nd More communication*
11. Did you know that you can attend organizational

meetings held by the executive? Just leave your name and phone number on the Hotline and we will inform you of the next meeting!

YES = 16

NO = 14

12. Where do fish the most? (please list only the top four)  
*1st Credit River*  
*2nd Wilmot Creek*  
*3rd Bighead River*  
*4th Bronte Creek*
13. What are your three favourite species to fish for?  
*1st Steelhead*  
*2nd Pacific Salmon*  
*3rd Bass*
14. How many days a year do you fish?  
*1st 75*  
*2nd 45*  
*3rd under 30*  
*4th over 100*
15. How many days of the year do you fish the Credit River?  
*1st 30-40*  
*2nd 20-30*  
*3rd over 40*  
*4th under 10*
14. Have you every caught an Atlantic Salmon, and do you have any photos of it?  
*No (24)*  
*Yes (6) - only two have photos*
15. Are you aware of the phenomenal Bass and Pike fisheries available in the Credit River Watershed?  
 YES = 11  
 NO = 20  
 I will write some articles about this to increase awareness.
16. If you have any other comments or questions you would like to make please do so below.
  1. "Open more river to fish around Erindale Park".
  2. "Change regulations on extended season to prevent the slaughter of pre-spawn steelhead".
  3. "Awareness on the serious pike infestation of the Alton branch of the Credit River in prime brook trout habitat", as well as above Inglewood in brown and brook trout habitat.

### ANSWERS TO THE COMMENTS

1 and 2

On January 2nd, 1995 CRAA submitted a proposal to the Ontario Ministry of Natural Resources for opening the

*Continued on page 9*



## JULY 1994 QUESTIONNAIRE REVIEW CONTINUED

Credit River to Eglinton Avenue until December 31 of each year to expand the lower Credit River fishery. The proposal asked for a 'single barbless hook regulation' to be included for Erindale Park and the new section year round. Additionally, a one fish limit - year round was requested. Further, a no kill zone for steelhead was requested for Erindale Park from January 1 to the last Saturday in April. This means you could fish for steelhead, but can not keep them. These options were chosen from a wide variety debated at the CRAA general meeting on November 30, 1994.

THESE REGULATIONS MAY BE IMPLEMENTED IN THE 1996 SEASON.

### ANSWER TO COMMENT 3

CRAA volunteers have removed almost one dozen northern pike from the Trout Unlimited section of the upper Credit River while electro-fishing with the MNR over the last two years. Pike escape from the Orangeville Reservoir and have taken up residence in miles of prime resident trout water. Unfortunately there is no easy way to get rid of them.

## NOTICE TO MEMBERS

### MEMBERSHIP ITEMS

The long wait is over for your hat if you are a members that has not received one. The missing files were finally discovered and our club hat with club crest has been ordered. The last order was in March, 1991 and we ran out of them in February 1994. The new hats should arrive in January and can be picked up at club events.

We apologize for the delay.

Many members have wondered what is given out for new members and renewals, so here is a complete list.

#### NEW MEMBERSHIP (effective since 1990)

- \* Club hat with crest
- \* 4 Light Lines newsletters
- \* Membership card
- \* Member discounts at tackle shops
- \* Tournaments, barbecues, club picnics, and other events

#### RENEWALS (effective since January 1, 1994)

- \* CRAA pewter pin
- \* 4 Light Lines newsletters
- \* New membership card
- \* Member discounts at tackle shops
- \* Tournaments, Barbecues, club picnics, and other events

If you have not received a certificate for either a hat or pewter pin please call the hotline and leave us a message.

### CRAA HOTLINE

The current hotline is costing CRAA \$55.00 a month, which is much more than it should. As of January 15, 1995 a new hotline will be established. The current

hotline number (567-6656) will run until February 28, 1995 with a recording of the new phone number. The new hotline will only cost \$20.00 a month. A savings of \$420.00 a year to the club.

### MEMBER DISCOUNTS

All CRAA members in good standing will receive discounts with the presentation of your membership card on most merchandise at the following stores:

#### ANGLING SPECIALTIES (Mississauga)

325 Central Parkway West, Unit 42

Mississauga, Ontario, L5B 3X9

905-275-4972

10% off fly tying material and some tackle

#### THE BAIT WORKS

16 Highway #26 (Beside Liquor Store)

Thornbury, Ontario

519-599-6344

10% of most merchandise

#### STEELHEAD SPECIALTIES

87 Bronte Road

Oakville, Ontario

905-827-3535

10% off most merchandise

#### \*\*\*NEW\*\*\*SPORTS UNLIMITED\*\*\*NEW\*\*\*

382 Queen Street East

Brampton, Ontario, L6V 1C3

905-457-4674

10% of some merchandise, 5% of electronics and downriggers

Remember these discounts are a privilege! Do not abuse them, or argue with store clerks or owners.

**CRAA HOTLINE 567-6656**



## CRAA AMBASSADORS

By John Kendell

What am I talking about when I title this article "CRAA AMBASSADORS"? Well, it comes from something that has happened all to often this year, as well as past years. At every opportunity I have I speak to people (mainly anglers) about CRAA, suggesting they join, telling we need thier help, and informing them that they would benefit too. I hope all our members do the same because membership is our strength.

Unfortunately I often hear the same thing: "I've run into some of your members who think they own the river!", or "I don't like the way some of your members act!". Well, it is true, there have been some bad apples, but I'd like to think most of them are gone. But it only takes one to ruin it for the rest of us. That is where the idea of "CRAA AMBASSADORS" has come from.

We are all ambassadors of CRAA, and we should always act that way. I'm not talking about being a perfect person, but simply being reasonable and courteous to others. We are all a part of CRAA and as members we carry around the reputation of the club. Overall the club has a good reputation, especially with the government and the press. The only bad reputation we have is from disgruntled anglers who still have the taste of a 'bad apple' in thier mouth.

I would like to ask every member to represent CRAA the way we are: a group of hard working guys and gals that enjoy fishing and want to make a difference to improve the fishery. Everyone works for the club in their own way. However we all represent CRAA in the tackle shops, on the rivers, and at the pier. I encourage all of you to get your friends involved and enlighten the rest of the angling population. You can make a difference to CRAA and to the fishery that we all love.

In the future I look foward to hearing my favorite comment from strangers, "Have you heard about CRAA, they're doing a lot of good work".

## ANGLING SPECIALTIES

A DIVISION OF FIVE CHAINS ENTERPRISES CORP.  
THREE LOCATIONS: TO SERVE OUR CUSTOMERS

**CENTRAL**  
2104 Hwy. 7 West, Unit 15  
Concord, Ont. L4K 2S9  
Tel. 416-660-9707  
Fax 416-660-9697

**EAST**  
3251 Kennedy Rd., Unit 4  
Scarborough, Ont. M1V 2J9  
Tel. 416-609-0804  
Fax 416-609-0861

**WEST**  
325 Central Parkway West, Unit 42  
(Corner of Confederation Parkway)  
Mississauga, Ont. L5B 3X9  
Tel. 416-275-4972

## MARKETPLACE

\*Angler  
Specialties  
And More

The Bait Works  
and Sporting Goods

BRUCE GREEN

16 Bruce St. N  
Harbour Mews  
Thornbury, Ont. N0H 2P0 519-599-6344

\*Charters  
Arranged



**SPORTS**  
Unlimited

BRAMPTON'S SOURCE FOR SPORTS  
D & I SPORTS INC.

382 QUEEN ST. E.,  
BRAMPTON, ONTARIO  
L6V 1C3

BUS: (905) 457-4674  
FAX: (905) 457-4047

## Steelhead SPECIALTIES



ROD BUILDING AND TACKLE FOR ALL SPECIES

ST. CROIX \* LOOMIS

Large Selection of Custom Rods (up to 16 ft.)  
Rod Blanks and Component Parts

CUSTOM MADE RODS TO ORDER, CUSTOM TIED FLIES  
SCARVING, FLY TYING BENCHES, ROD WINDING JIGS AND MORE

**FLOAT REELS**  
Stanton  
J.W. Young  
Streamrunner  
Streamaster  
Pacific Steelheader

**LOTS OF OTHER ITEMS**  
Mike's Eggs  
Ande Line  
Maxima Line  
Dismore

**FLOATS**  
Blackbird  
Thill Middy  
Grayling  
Cuffs

**TAXIDERM SERVICES**  
**BAIT**  
Worms  
Roe



Large selection of fly tying materials,  
salmon lures, musky baits and bass baits  
\*\*\* new on market \*\*\*  
Golden pearl roe preserver  
This is the best preserver we  
have found, reusable and can  
colour to your liking.  
(dealer enquiries welcome)

Hamilton O.E.W. Toronto  
Hwy #25  
Bronte creek  
Lakeshore  
Located at side of jewelry  
X store (Diamond craft)  
Lake Ontario

87 Bronte Rd. Oakville, Ontario Phone # (905) 822-3538  
Located next to Diamondcraft jewelry store

**CRAA HOTLINE 567-6656**