



# LIGHT LINES

JUNE 1995

Vol 6, No 3

## CREDIT VALLEY BASS FISHING

By John Kendell

I pulled into the Terra Cotta Conservation Area with Derek McNair to check on the CRAA upwelling box. It was early June and bass season was fast approaching. After checking out the upwelling box Derek and I walked to Wolf Lake, a human-made lake in the Conservation Area to look for some bass after Bob Morris' suggestion. What a shock. In this little lake (about six acres) there were tons of bass. Derek and I saw some up to four pounds, but Bob has seen them close to six!

Well time passed and it was finally bass opener. Unfortunately our regular trip to the Honey Harbour area was ruined by the weather so my father and I headed to Terra Cotta for a look at the upwelling box and a try for some bass. We arrived at Wolf Lake expecting a crowd, but it was deserted. One car sat alone in the parking lot so we pulled the rods out in anticipation of some fish. I never would have believed it if I didn't see it. Literally every cast a fish hit our tube jigs, surface lures, and small crank baits. Most fish were about a pound, but I landed at least ten between two and four pounds. This year those one pound bass should be closer to two, and the many four pound bass may be five.

Are you surprised to hear about such great bass fishing in the Credit Valley? I was! But the Credit Valley Conservation Authority has been stocking bass into Wolf Lake for the last six years now, and according to CVCA

Biologist Bob Morris it is a fantastic local fishery that has been developed. Access into the Conservation Area is a nominal fee and fishing is aloud on Wolf lake for bass and Muskrat Lake for Trout (which was stocked by CRAA last year). The bass are self sustaining in Wolf lake, and there are thousands in this small lake. On opener there are some weeds but by August the lake has a lot of surface weed. Great for surface baits! Canoes and row boats are allowed on the lake, but they do not have any there to rent, so bring your own. There is some excellent shore access, but I suggest wearing rubber boots.

Where else is there fantastic bass fishing in the Credit Valley. From Streetsville to Port Credit smallmouth bass reside over the summer. Unfortunately this fishery has been severely damaged by many people fishing for the bass before the season opens. When the bass are caught their nests are left unprotected and the eggs and fry are eaten by chubs, dace, and small trout. Enjoy the fishery, but don't pre-season fish!

The CVCA, MNR, and CRAA have also been involved with a project for the last four years transferring bass above the Streetsville Dam to establish a population as far up as Norval where habitat is very good. This will fill a void in the fishery and does not impact the trout because they utilize different parts of the river.

*Continued on page 5*

**NEW HOTLINE NUMBER: (905) 608-0169**



## Credit River Anglers Association LIGHT LINES

Contributions are welcome from members and non-members alike.  
Send your articles, comments and suggestions to:

Light Lines Editor  
Credit River Anglers Association  
60 Dundas Street East, P.O. Box 48042  
Mississauga, Ontario L5A 2G0  
Or call the CRAA 24-hr Hotline

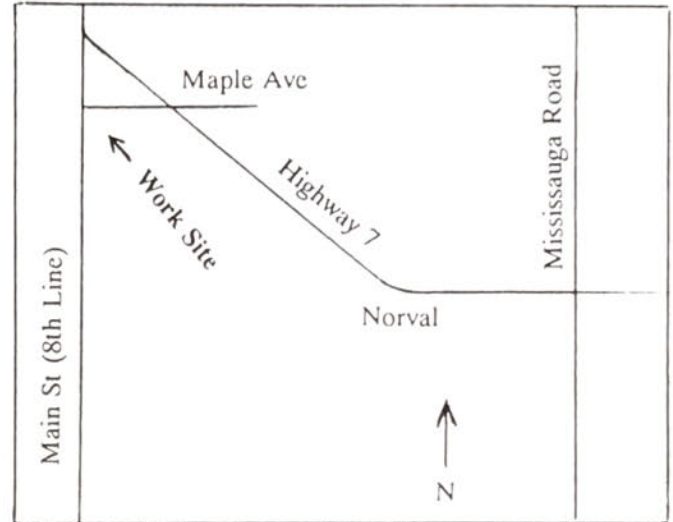
Commercial advertising rates:  
1/16 page – \$15, 1/8 page – \$30, 1/4 page – \$50  
Maximum size 1/4 page.

Newsletter production: 200 copies per issue  
Printed on recycled paper.

## JUNE CONT'D

### MAP TO CEDERVILLE PARK

Meet at 9:00 am



## UPCOMING EVENTS

### JUNE

- 10 **CRAA WORKDAY** (9:00 am - 4:00 pm)  
CRAA will work on Silver Creek in Georgetown. CRAA will work with Izaak Walton Fly Fishers Club in Cederville Park (8th Line and Maple Ave.). We will construct bank stabilizers and lunger habitat, as well as deal with some beaver dams that are blocking fish migration. Bring your work gloves, shovel, and appetite. As usual we will hold a barbeque at the side of the river while we are working.

Bring your fishing rod along too. The area we are working in not only produces Steelhead, but has a fabulous speckled trout fishery.

- 11 **CRAA ANNUAL PICNIC** (9:30am to 3:30pm)

CRAA's Annual Picnic will be held at Dave Barr's Trout Club. Members will enjoy a barbeque, relaxation, and **great fishing**. You may keep the trout you catch (they're great eating), but they cost extra.

### BRING YOUR ROD

Admission is \$15.00 per family or \$7.00 per person. This includes food, pop, and fishing.

Dave Barr's Trout Farm has a small lake that is loaded with Rainbow Trout. It is not uncommon to catch 50 to 100 trout a day averaging 2 lbs. Trout weigh up to 6 lbs.

**SEE PAGE 6 FOR FULL DETAILS**

*Continued on page 3*

**NEW HOTLINE NUMBER: (905) 608-0169**



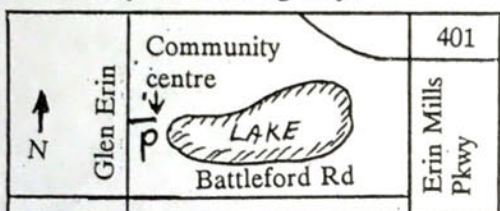
## UPCOMING EVENTS

### JULY CONT'D

- 9 **URBAN FISHING FESTIVAL** (9am - 3pm)

**Lake Aquitaine (Meadowvale)**  
Volunteers are needed to help kids catch fish. CRAA will hold a barbeque for the kids and supply bait and some tackle that has been donated by local tackle shops.

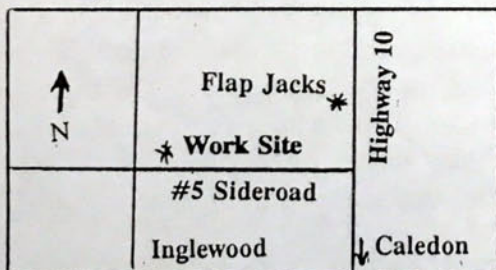
Make sure you take part in this extremely rewarding day.



### AUGUST

- 12 **WORK AT SLIGO BRIDGE** (9am - 3pm)

**"Forks of the Credit River" -** Volunteers will work with Trout Unlimited to construct bank stabilizers and improve habitat for Browns, Speckles, and juvenile Atlantics at sideroad #5 behind "Flapjacks" near Caledon. Bring your waders, gloves, and fishing rod. There are browns up to 7 lbs in this area just waiting to thank you for your work.



- 27 **WILMOT CREEK WORKDAY** (9am - 3pm)

CRAA will work with Ontario Steelheaders to improve some of the pools in the all year section of Wilmot Creek. Call the CRAA Hotline to car pool. (Details in the August updater)

## CRAA IN THE NEWS

As time passes the Credit River Anglers Association becomes more and more common in the news. Whether its the Toronto Star, Mississauga News, Canadian Sportfishing, Ontario Out of Doors, Outdoor Canada, or the Real Fishing magazine (Bob Izumi's new magazine).

### Why?

The media takes notice of who's doing the real work, especially when it comes to conservation work related to fisheries. Since 1989 when CRAA was founded a lot has been accomplished and the media has continually taken notice.

Since January 1994 there have been no less than a dozen articles discussing CRAA's work in the media. Topics include our fish ladder results, CRAA's rehabilitation work, our social events like the salmon tournament and barbecue, as well as regulation changes such as the proposed season changes to the lower Credit River currently waiting for public hearings with the MNR.

The point is CRAA is showing the whole community that we are here to stay! We're here to make the river a healthier place with more fish and wildlife.

You should be proud to be a member of CRAA.

## ANGLING SPECIALTIES

A DIVISION OF FIVE CHAINS ENTERPRISES CORP.  
THREE LOCATIONS: TO SERVE OUR CUSTOMERS

CENTRAL

2104 Hwy. 7 West, Unit 15  
Concord, Ont. L4K 2S9  
Tel. 416-660-9707  
Fax 416-660-9697

EAST

3251 Kennedy Rd., Unit 4  
Scarborough, Ont. M1V 2J9  
Tel. 416-609-0804  
Fax 416-609-0861

WEST

325 Central Parkway West, Unit 42  
(Corner of Confederation Parkway)  
Mississauga, Ont. L5B 3X9  
Tel. 416-275-4972



## MIRAMICHI RIVER TRIP

In September there will be a trip to the Miramichi River in New Brunswick that CRAA members are invited to participate in.

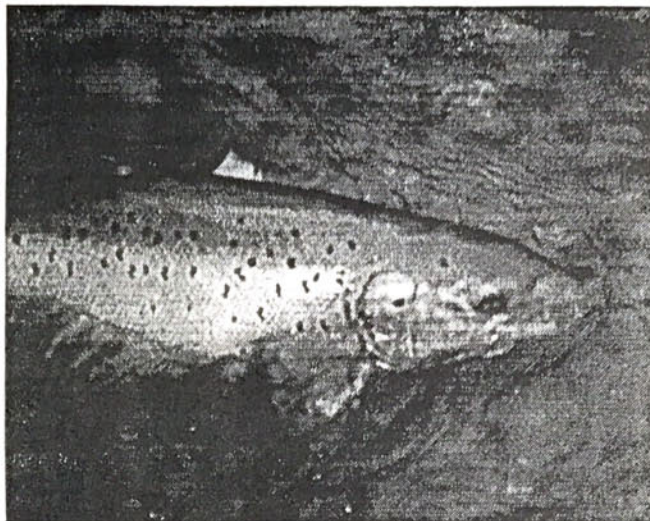
Dennis Tomichi, a long time member of CRAA has done the trip for the last two years with outstanding success. Dennis will be the coordinator of this years trip.

The trip is planned for five days. That's two days driving and three days fishing. The time frame is the last two weeks of September. The lodging will be at the Miramichi Lodge on the banks of the Miramichi River with two private pools. The cost? About \$500.00 for everything. This includes meals (prepared by a chef and fit for a king), lodging in a cabin for six, a guide for each set of two anglers, and **incredible Atlantic salmon fishing!**

Last year Dennis landed four Atlantics and lost another ten in three days fishing. This is incredible late season action that you should

be a part of. All you need is a fly rod (8 or 9 weight) some casting experience, and a strong arm. If you feel you don't have enough casting experience than you better come to the CRAA Annual picnic for some lessons.

If you are interested please call Dennis Tomichi at (905) 793-8743.



*A chrome Atlantic salmon*

---

## SALMON RIVER TRIP - PULASKI NEW YORK

In late October or early November CRAA will hold a second fishing trip. This time the famed Salmon River in Pulaski New York. The guide will be CRAA member Jay D'Andrea who has fished the Salmon River many times in the last five years.

We have chosen the Halloween time because it consistently produces big fish and lots of them. The Salmon River has a tremendous run of steelhead and Pacific salmon during the fall from a combination of intense stocking and some natural reproduction. The steelhead that

are stocked into the Salmon River are from Washington State and are winter run fish that grow **BIG**. The river is about two to three times larger than the Credit River with a proportionally similar run of fish.

The trip will probably be four days, two half days driving and three days of fishing. We will be staying at a hotel in Pulaski. **If your interested in this trip lease call the CRAA Hotline at (905) 608-0169.** Watch for more details in the September Light Lines.

**NEW HOTLINE NUMBER: (905) 608-0169**



Over 70 bass were transferred last year. If you catch a bass, especially a tagged one please report it to Bob Morris at the CVCA at (905) 670-1615.

The Orangeville Reservoir is another location that holds massive amounts of bass in the Credit Valley. The reservoir is a flooded gravel pit that was filled twenty years ago. It now has a very large bass and pike population. Bass up to six pounds have been caught every year and the largest pike is 23 pounds. The bass average two to three pounds and the pike average three to eight pounds. The fishing can be fantastic so make sure you give it a try. There is a boat rental on the lake at the parking area and the entrance fee is nominal. There is ample shore fishing available as well as, sand beaches, trails and picnic areas. It's a

great place for the whole family and there are lots of panfish for the youngsters to catch. People are encouraged to keep the pike out of the lake because some travel down the river into sensitive brook trout waters causing serious damage to the fragile native trout population. There is also a bass tournament held every summer on the lake with thousands of dollars in prizes. It is catch and release with bass boats aloud, but combustion motors are not aloud in the lake. Electric motors or paddle power only. Information can be obtained from Bob Morris at the CVCA.

Good luck fishing. Bass season opens June 24 in the Credit Valley this year.



## MEMBERSHIP DRIVE



THIS IS YOUR OPPORTUNITY AS A MEMBER TO INTRODUCE YOUR FRIENDS TO CRAA. GET THEM INVOLVED IN HELPING THE CREDIT RIVER FISHERY.

### PRIZES

PLACE	Approx. retail value	PRIZES	SPONSORS
1st	\$325.00	Neoprene waders fitted	Angling Specialties
2nd	\$200.00	Kodiak footwear (Sizes9-10)	Kodiak (G. Davidson)
3rd	\$175.00	Kodiak footwear (sizes9-10)	Kodiak (G. Davidson)
4th	\$150.00	Kodiak footwear (sizes9-10)	Kodiak (G. Davidson)
5th	\$70.00	Spinning rod and reel(6'6"	Hookers (G. Browning)
		Shimano rod and Shakespeare reel)	

### PROCEDURE:

Talk to all your fishing buddies and environmentally concerned pals. Introduce them to CRAA, tell them about the fishery and environmental rehabilitation work we do. Get them involved in making a better fishery in the Credit River and other premier trout and salmon streams.

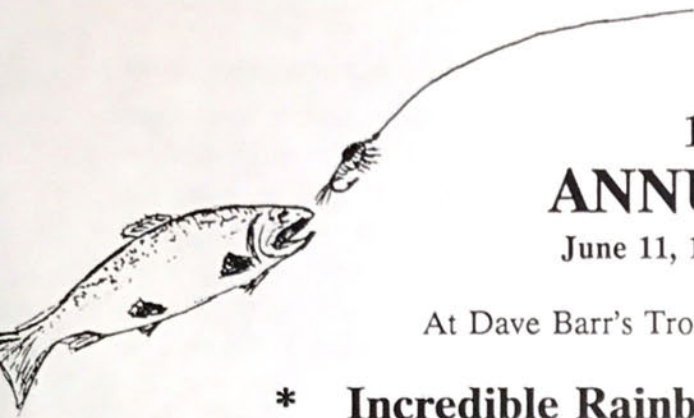
Have your friends fill out an application form that accompanies this mailing, and mail it to CRAA, with a cheque for \$25.00 enclosed payable to the "Credit River Anglers Association". The address is on the back of the application form.

**THE MEMBERSHIP DRIVE HAS BEEN EXTENDED TO SEPTEMBER 30, 1995**

**SIGN UP YOUR FRIENDS! MEMBERSHIP MAKES US STRONG!**

Just write your name (the sponsor) on the cheque from the new member you signed up!





# 1995 CRAA ANNUAL PICNIC

June 11, 1995 - 9:30am to 3:30pm)

At Dave Barr's Trout Farm (just north of Orangeville)



- \* **Incredible Rainbow Trout Fishing**
- \* **Barbecue with all the fix'ns**
- \* **Fly casting lessons**
- \* **Fly tying demonstration**
- \* **Fly fishing pond techniques**
- \* **Hiking and relaxing in the great outdoors**

**COST:** \$15.00 Per Family (Two adults and children under 15)  
\$7.00 Per person  
There is an additional \$5.00 parking fee per car.

This pays for:  
\* food and pop  
\* fishing fee  
\* use of the property  
(The normal fee is  
\$15.00 per person)

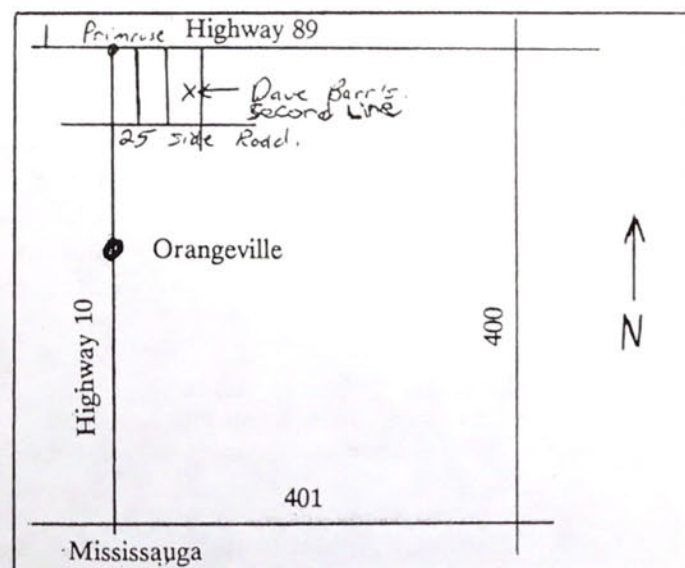
**NOTE:** If You wish to keep any fish there is a fee per  
pound charged by the owner.

## WHAT YOU NEED TO BRING:

- \* **Your Family**
- \* **Fishing Gear**
- \* **Cooler (If your keeping fish)**
- \* **your lures and bait or flies**

**NOTE:** **YOU MAY ONLY CATCH  
AND RELEASE FISH IF  
YOU ARE FLY FISHING**  
(owners rules)  
**So CRAA will bring some  
extra fly rods along!**

## HOW TO GET THERE



# THIS IS AN EVENT FOR THE WHOLE FAMILY

**NEW HOTLINE NUMBER: (905) 608-0169**